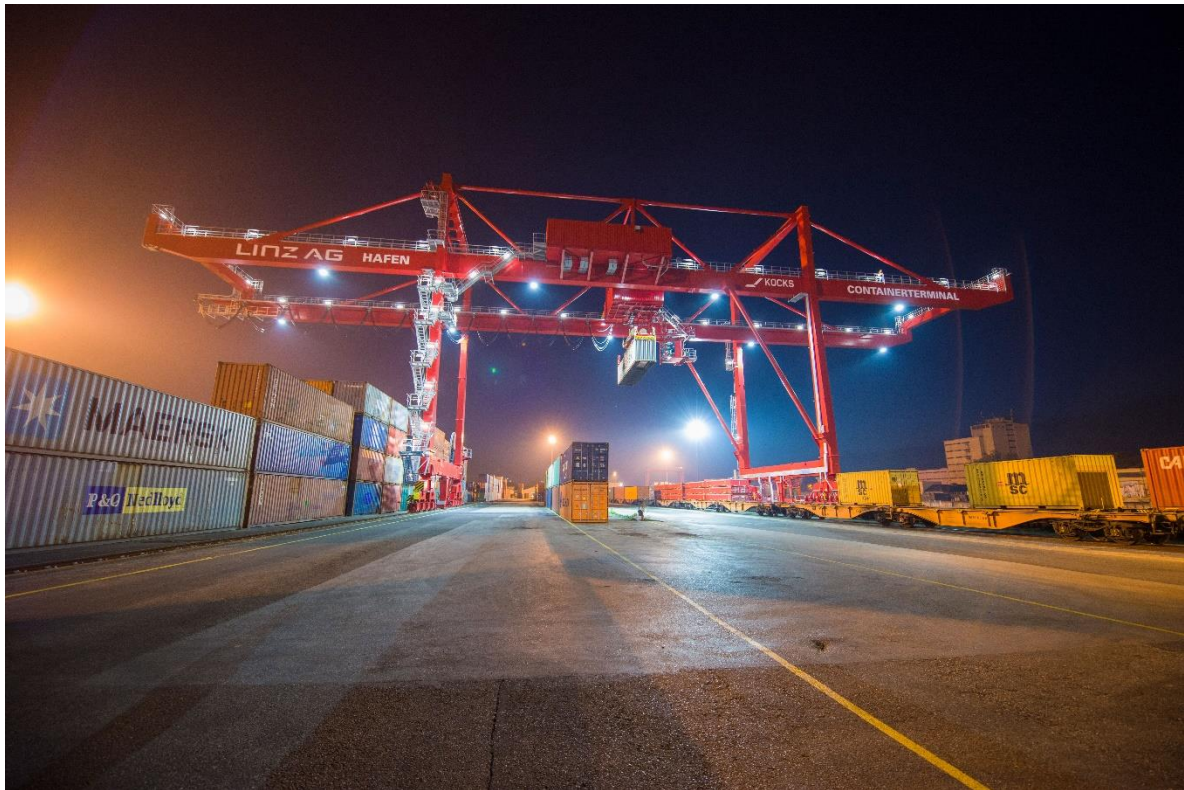


# Linz Stadthafen CCT

Trimodal: Rail – Road – Ship



Linz Stadthafen CCT © MG&GB

## Contents

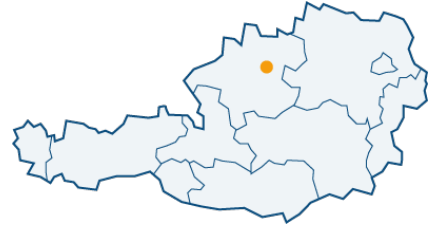
General information .....	2
Terminal infrastructure .....	3
Main transport destinations/origins .....	5
Access – description .....	6

## General information

### Location

Saxingerstraße 1a, 4020 Linz

GPS: 48.310767, 14.325397, [Route planner](#)



### Contact

Enrico Tiringer (terminal manager)

Phone: +43 (0) 732 3400 6941

Fax: +43 (0) 732 3400 156941

E-mail: [depot.linz@linzag.at](mailto:depot.linz@linzag.at)

[hafenlinz.at](http://hafenlinz.at)

### Opening hours

Monday to Friday 5.00–19.00

<b>Terminal operator</b>	Linz Service GmbH
<b>Terminal owner</b>	Linz Service GmbH
<b>Terminal information</b>	Opened in 1979 Total area 125,000 m <sup>2</sup> Area available for the establishment of new enterprises 30,000 m <sup>2</sup> Expansion area (developed & covered) 5,000 m <sup>2</sup>
<b>Security</b>	Enclosure Identification in/out Supervision by security staff AEO – certified

## Terminal infrastructure

### General information

Transshipment area general cargo	
Transshipment area bulk cargo	
Container dispatch.....	20', 30', 40', 45'
Semi-Trailers dispatch	
Swap bodies dispatch	

### Storage facilities (by Gebr. Weiss)

General storage facilities

Outdoor storage area .....	10,000 m <sup>2</sup>
Covered storage area .....	110,000 m <sup>2</sup>
Pallet spaces .....	80,000 pallet spaces for hazardous materials, ambiente, chilled and frozen products

### Rail

Total length of railway siding .....	37,000 m
Maximum train length.....	630 m
Loading tracks.....	4
Maximum of trains treated in parallel .....	2

### Road

Parking area.....	3,000 m <sup>2</sup>
Number of loading roads.....	2
Length of loading roads.....	800 m
Access to high level road network .....	B 3, B 125, B 129, B 1
Near highways (up to 30 km) .....	A 7 (2 km), A 1 (10 km)

## Ship

Length of quay.....	9,300 m
Number of basins .....	6
Number of berths	
.....	35
Quayside zone for transshipment .....	10,000 m <sup>2</sup>
Water depth .....	7 m
Permissible draught.....	2.7 m

## Container

Container storage area.....	5,000 TEU
Empty container/depot	

## Transshipment

Maximum total transshipment volume .....	1,200 TEU/d
Container .....	40 TEU/h
General cargo .....	50
Bulk cargo .....	150
Forklifts < 3 t.....	9
Forklifts 3–5 t.....	3
Forklifts > 5 t.....	4
Gantry cranes .....	2 x 41 t
Lumber stackers	
Mobile cranes .....	up to 200 t
Paper clamps	
Pneumatic equipment	
Reach stackers .....	8 x 10–45 t
Spreader	
Wheel loader	
Further transshipment devices	

## Services

Weighbridge  
Container cleaning  
Container maintenance  
Container repair facility  
Container stuffing and stripping  
Cooling units service  
Customs office  
Dangerous goods handling  
Dangerous goods preparation facilities  
Heavy lift  
Packaging Services  
Veterinary inspection  
Unaccompanied combined transport – Maintenance facilities  
Unaccompanied combined transport – Transshipment  
SOLAS container weight verification

## Main transport destinations/origins

### Hub function

	Pre-carriage	Destination
<b>Rail</b>		Rotterdam, Hamburg/Bremerhaven, Ports of South Europe
<b>Water</b>	0.01 % of total transshipment volume only	

### Gateway function

	Pre-carriage	Destination
<b>Rail</b>	for several shuttle trains	Rotterdam, Hamburg/Bremerhaven, Trieste und Koper
<b>Water</b>	ARA-Ports, Germany, Hungary	ARA-Ports

## Catchment area

Cities, industrial areas – 70 km..... NUTS 3 Regionen 312, 313, 314, 121

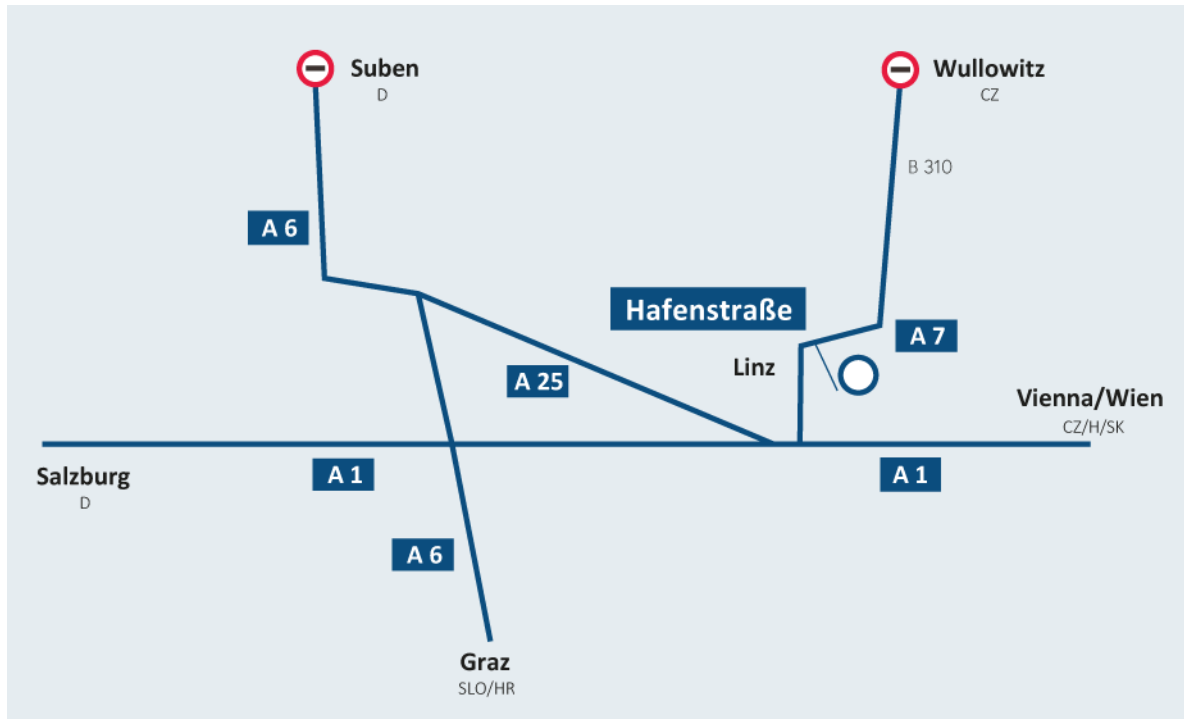
## Access – description

**From border crossing at Wulowitz (CZ) – For runs in the context of combined traffic exemption from the ban on night-time driving**

- B 310
- Unterweikersdorf
- A 7 motorway (A 7 Mühlkreisautobahn)
- Exit *Hafenstraße* (EXIT 11)
- B 129 Hafenstraße
- Industriezeile
- Stadthafen Linz

**From border crossing at Neu-Naglberg (CZ) – For runs in the context of combined traffic exemption from the ban on night-time driving**

- B 310
- Unterweikersdorf
- A 7 motorway (A 7 Mühlkreisautobahn)
- Exit *Hafenstraße* (EXIT 11)
- B 129 Hafenstraße
- Industriezeile
- Pummerer Straße
- Saxingerstraße



### Legal notice

Federal Ministry of Climate Action, Environment, Energy, Mobility, Innovation and Technology,  
Radetzkystraße 2, 1030 Vienna, Austria

Department II/5 Freight Transport

Last update: December 2020

Phone: +43 1 711 62-651204

E-mail: [ii5@bmk.gv.at](mailto:ii5@bmk.gv.at)

[bmk.gv.at/hubs-in-austria](https://bmk.gv.at/hubs-in-austria)